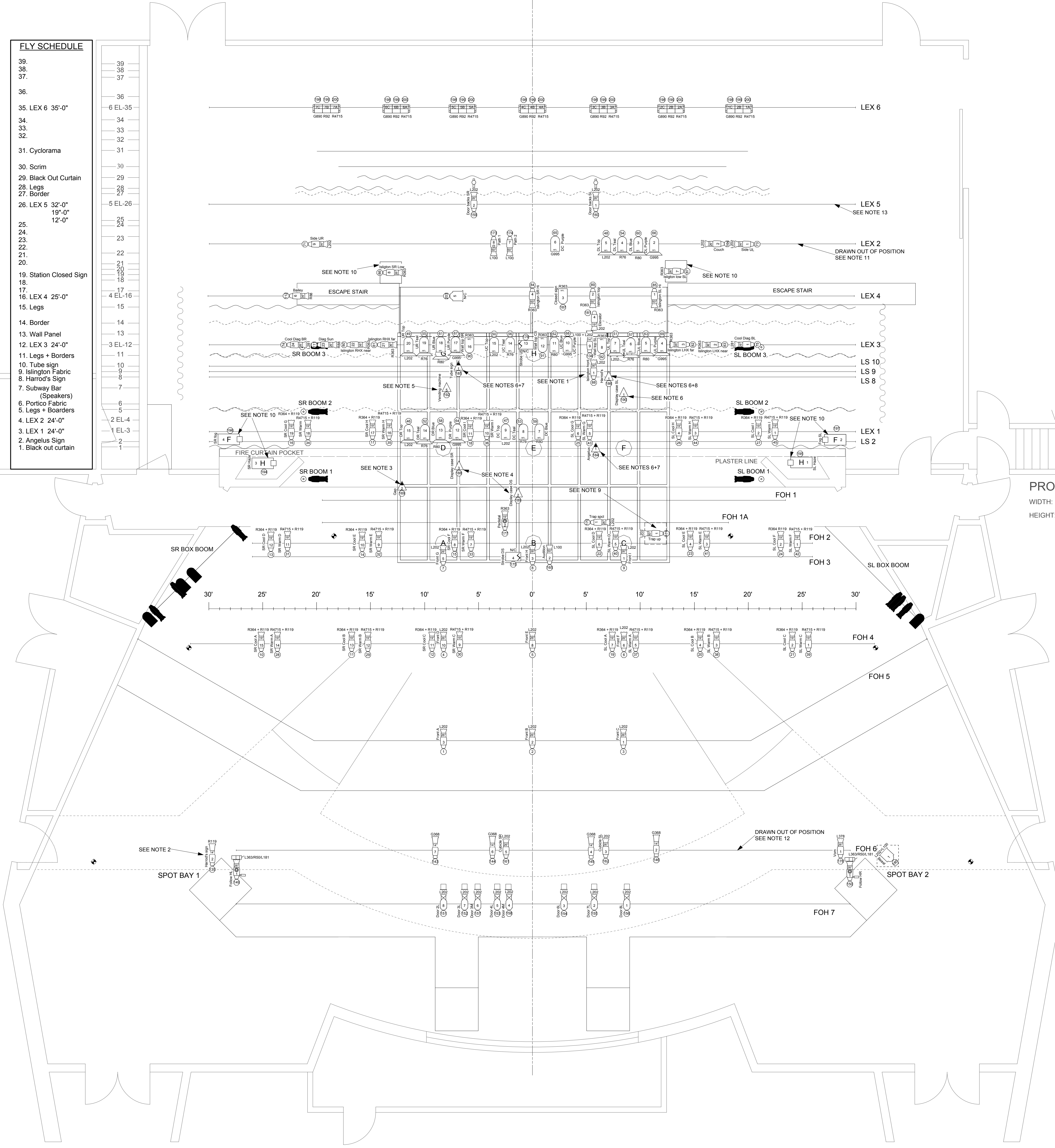
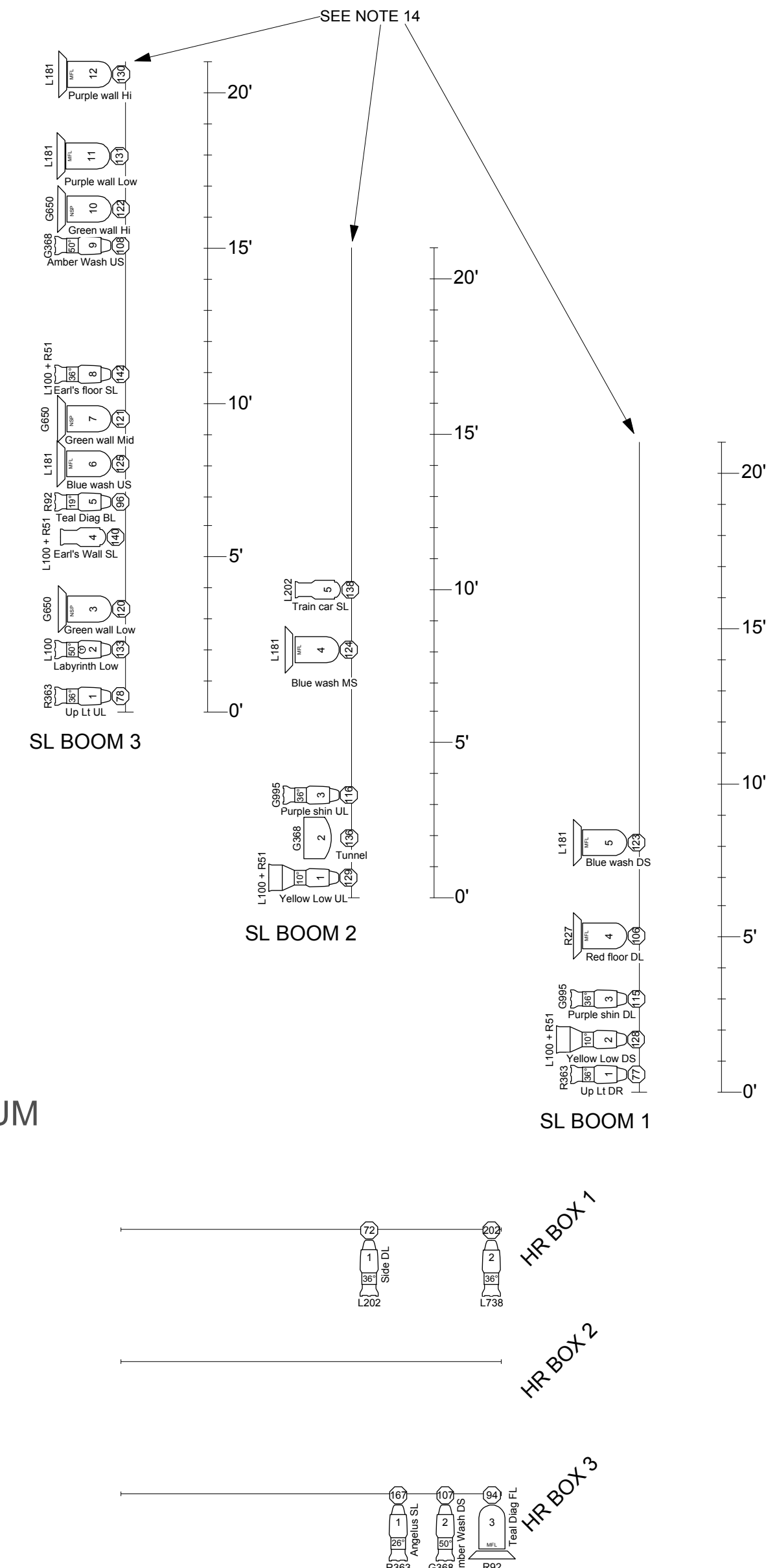
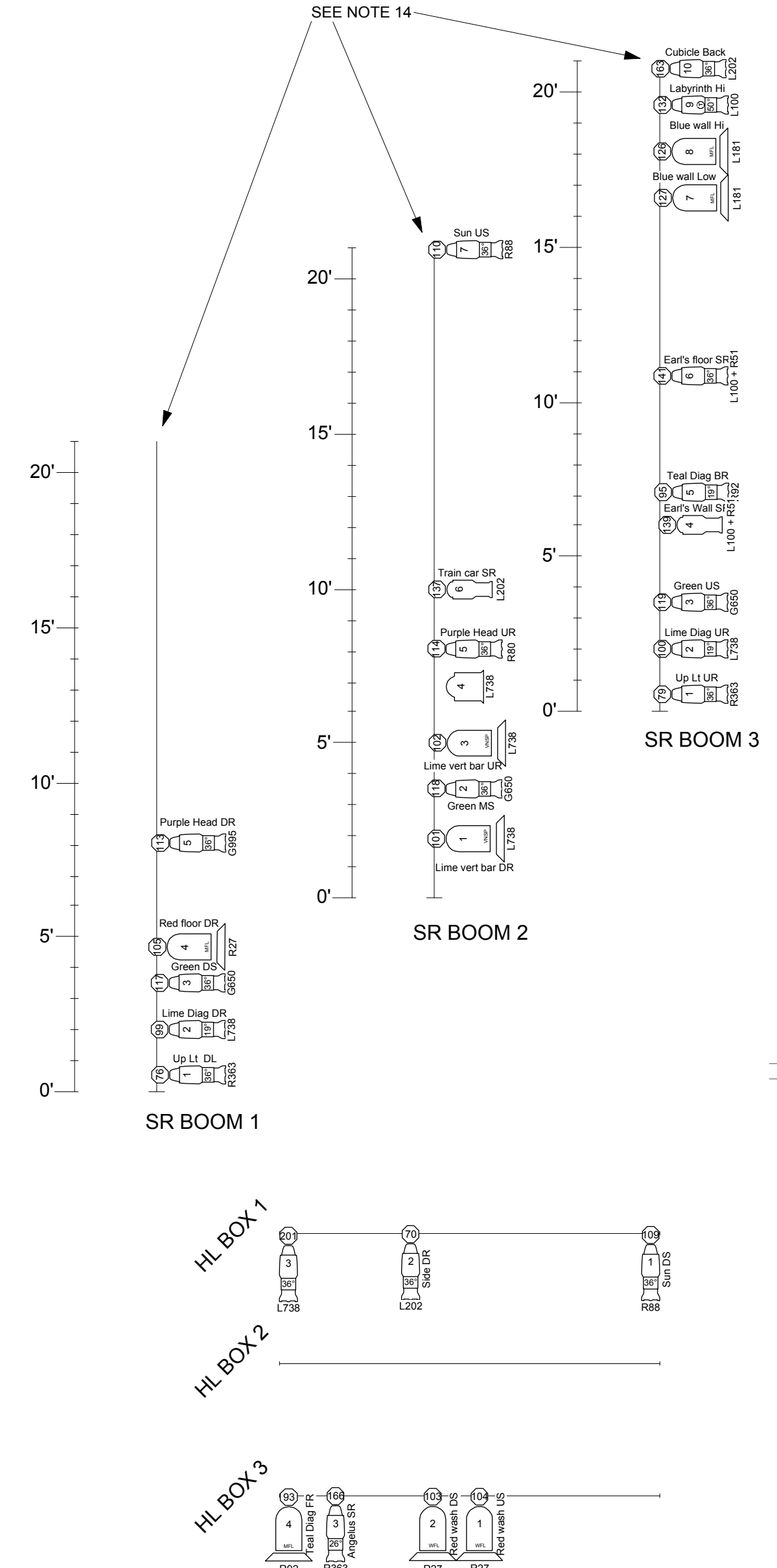




**FLY SCHEDULE**

39.	
38.	
37.	
36.	
35.	LEX 6 35'-0"
34.	
33.	
32.	
31.	Cyclorama
30.	Scrim
29.	Black Out Curtain
28.	Legs
27.	Border
26.	LEX 5 32'-0"
25.	19'-0"
24.	12'-0"
23.	
22.	
21.	
20.	
19.	Station Closed Sign
18.	
17.	LEX 4 25'-0"
16.	
15.	Legs
14.	Border
13.	Wall Panel
12.	LEX 3 24'-0"
11.	Legs + Borders
10.	Tube sign
9.	Islington Fabric
8.	Harold's Sign
7.	Subway Bar (Speakers)
6.	Portico Fabric
5.	Legs + Borders
4.	LEX 2 24'-0"
3.	
2.	Angelus Sign
1.	Black out curtain



**PROSCENIUM**  
WIDTH: 42'-4 3/4"  
HEIGHT: 23'-6"

**LEGEND**

	ETC S4 10 575W
	ETC S4 14 575W
	ETC S4 19 575W
	ETC S4 26 575W
	ETC S4 36 575W
	ETC S4 50 575W
	Altman 6X9 750W
	Altman 6X12 750W
	Altman 6X16 750W
	8\" FRES 1kW
	Beam Projector
	PAR 64 VN5P 1kW
	PAR 64 VN5P 1kW
	PAR 64 MFL 1kW
	PAR 64 WFL 1kW
	3 Cell lanero 750W
	Practicle
	RGB LED Tape
	Atomix 3000 strobe
	Hazer
	Fogger
	Boom Base
	House
	Barr Door
	Color/Boomerang
	Template/DMX Iris
	Follow spot handle

**REVISIONS**

10/11	- Unit #'s and missing instruments
10/19	- Boom height, back light instruments, notes

- NOTES**
- Ch 88 is overhung and kept clear of kabuki drop.
  - Ch 135 yokes out 90 deg.
  - Ch 169 is a 25' strip of RGB LED tape running parallel to the plaster line across width of playing space and recessed into the floor. Please see designer for details.
  - Chs 188-190 are roaming set pieces. Battery sources, no cable. Off stage positions TBD. Please see designer for details.
  - Ch 192 is a lit vending machine, enters and exits UR.
  - Chs 184-186 are lit signs and fly in and out. Trim heights to be set by scenic.
  - Ch 184 and 185 are light boxes lit with LED tape. Please see designer for details.
  - Ch 186 is lit with frosted pearl string lights. Please see designer for details.
  - Ch 171 is mounted in the trap room.
  - Chs 86, 87, and 194-197 are positioned on the deck.
  - LEX 2 is on Line Set 4.
  - FOH 6 lives under FOH 7.
  - LX 5 flies in and out with multiple trim heights.
  - All stage booms are 21'-0" high.

Cornish College of the Arts Presents:

**Nowhere**  
The Cornish Playhouse  
Lighting Plot

LD: Dani Norberg      Dir: Roger Benington  
Dani.norberg@arts.cornish.edu      (317) 509-0041      Set: Matthew Smucker  
ALD: Matthew Ray      ME: Lea Friend & Keny Dutton  
Scale: 1/4" = 1' 0"      Date: 19 October 2013